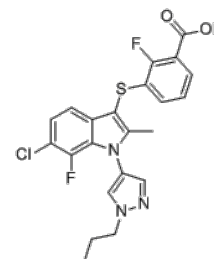


Product Name : PAT-048
Cat. No. : PC-60639
CAS No. : 1359983-15-5
Molecular Formula : C₂₂H₁₈ClF₂N₃O₂S
Molecular Weight : 461.912
Target : Autotaxin
Solubility : 10 mM in DMSO



Biological Activity

PAT-048 (PAT048) is a potent, selective, noncompetitive **autotaxin** inhibitor with IC₅₀ of 1.1 nM against the lysoPLD activity of human ATX.

PAT-048 exhibits good potency for inhibition of lysoPLD activity with IC₅₀ of 8.9 nM and 22 nM in human blood and mouse plasma, respectively.

PAT-048 decreases ATX activity systemically and in the lung, without effect on pulmonary LPA or fibrosis in bleomycin-challenged mice.

References

Black KE, et al. *FASEB J.* 2016 Jun;30(6):2435-50.

Castelino FV, et al. *Arthritis Rheumatol.* 2016 Dec;68(12):2964-2974.

Bain G, et al. *J Pharmacol Exp Ther.* 2017 Jan;360(1):1-13.

Caution: Product has not been fully validated for medical applications. Lab Use Only!

E-mail: tech@probechem.com